

August Meeting

Meeting with Philadelphia AGCS and
Pocono TGA

Lehigh Country Club

August 12, 2002

10:15 AM - Speaker

11:00 AM - Lunch

12:30 PM - Shotgun

5:00 PM - Cocktails/Grazing Dinner

There will be a CPGCSA Board of Directors
Meeting at 8:30 AM.

Superintendent Profile

John Chassard has been with Lehigh Country Club for 19 years. After graduating from Penn State in 1984, John assumed the Assistant position, which he held until becoming Superintendent in the spring of 1987. John has just realized he's been at Lehigh for almost half of his life. Yes, despite the gray, he really is only 39 years old. He enjoys golf, fishing, and any stress relieving activity. John has been blessed with two children, Luke and Madaket and has been married to Susan for 18 years. His dog Cisco is his constant companion and reminder that dogs really are, man's best friend.

Golf Course Profile

Lehigh Country Club was built in 1927 by the architectural firm of Toomey and Flynn. Golf Week Magazine recently recognized Lehigh for the first time as a top 100 course in the country for its classic course category. It's a natural parkland course, situated along the Little Lehigh (stream) in the rolling hills of the Lehigh Valley. The course features some very dramatic topography changes and has some of the best greensites William Flynn ever conceived. With three sets of tees ranging from 5,500 to 6,600 yards and playing to a par 70, Lehigh offers plenty of challenge and enjoyment to all levels of golfers.

Golf Attire - No jeans Dinner—Casual

Mid-Atlantic USGA Update

The Dog Days of Summer Are Here!

By Darin S. Bevard
updated 7-22-02

The past two growing seasons have seen little in the way of extended periods of hot and humid weather. This year is different. Two spells of weather with temperatures in the mid to upper 90's have already been experienced. The week of the July 4th holiday was particularly hard on many golf courses. Dry weather persists in many parts of the region. In Southeastern Pennsylvania, counties still affected by water restrictions are feeling the pinch. Water allotments are being used up. Parts of Virginia are very dry and restrictions have been imposed. Additionally, some golf courses are running out of water altogether with some having less than 21-days of water supply left. Unless significant rainfall is received soon, golf courses will begin to show areas of drought and heat stress. Some of the challenges seen to date are:

- Localized Dry Spot is a significant problem on most courses. Hand watering is the best way to manage this problem. Additionally, solid time aeration and treatment with wetting agents can help. Do not forget to check the quality of irrigation coverage, and do not over water!
- Disease. As for turfgrass diseases, the usual suspects are again causing damage. During the week of July 4th, many courses were damaged by Pythium blight, brown patch, and dollar spot. Anthracnose continues to be a major topic of conversation during our visits as well.
- Recently, bacterial wilt is affecting putting greens on several golf courses.

.....continued on page 10.....

Inside This Issue

President's Message	Page 2
Directions to Lehigh Country Club	Page 2
Membership News	Page 3
Heather and Gorse	Page 5
The Election Road by Mark Kuhns	Page 8
Green Sheet Supporters	Page 11

President's Message

This year came in like a lamb and looks like it's going out like a monster! After a mild winter, it seems like pests of all kinds are beginning to take hold in untreated areas. I'm sure most of you are in the survival mode just like me! We are in a humbling business that literally brings you to your knees, sort of like round 3 of the British Open did to Tiger. How many thought it was about time to see Tiger struggle?

The Philly/Central meeting at Regents Glen was well attended and a huge success. The golf course was perfect and I would like to thank Ryan Freed and his crew for a job well done. Thanks also to Mark MacDonald for helping out with details for the entire day and allowing us to enjoy the exclusive Box Hill Club. The food was delicious and service was great.

Dr. Rich Buckley of Rutgers was very informative in giving us an update on disease and reported that the big "A" disease is beginning to rear its ugly head. We presented Rich with a CPGCSA shirt, which he promises to wear at the Rutgers Field Days.

Our next meeting is a tri-meeting with Pocono and Philly at Lehigh Country Club, which I consider to be one of the biggest "sleepers" in the state. The meeting will most definitely be filled up by the time you read this so hopefully you have signed up!

Let it rain!

Bill Brooks

Directions to Lehigh Country Club

ROUTE 22 Lehigh Valley International Airport

Route 22 West to 309 South. After one exit Route 309 South merges into Interstate 78 East. Go to second exit (now Interstate 78), Cedar Crest Boulevard, and bear right off the ramp. Lehigh Valley Hospital will be on your right. Go through two traffic lights. After the second light, go about 7/10 of a mile. Lehigh Country Club is on the left-hand side. Look for white brick pillars with LCC on them, just before the third light.

INTERSTATE 78 From Hellertown, Easton, New Jersey

Stay on 78 West to Cedar Crest Boulevard exit. Turn left onto Cedar Crest Boulevard. Lehigh Valley Hospital will be on your right. Go through three traffic lights. After the third light, go about 7/10 of a mile. Lehigh Country Club is on the left-hand side. Look for white brick pillars with LCC on them, just before the fourth light.

HARRISBURG

Stay on 78 East to the Cedar Crest Boulevard Exit. Bear right off the ramp. Lehigh Valley Hospital will be on your right. Go through two traffic lights. After the second light, go about 7/10 of a mile. Lehigh Country Club is on the left-hand side. Look for white brick pillars with LCC on them, just before the third traffic light.

PHILADELPHIA

Take the Northeast extension (route 476) of the PA Turnpike to the Lehigh Valley exit. After the tollbooth (keep right) and follow signs for Allentown. You are now on Route 22 East for about 1/4 mile. Take the 309 South exit. After one exit, Route 309 South will merge into Interstate 78 East. Go to the second exit, Cedar Crest Boulevard, and bear right off the ramp. Lehigh Valley Hospital will be on your right. Go through two traffic lights. After the second light go about 7/10 of a mile. Lehigh Country Club is on the left-hand side. Look for white brick pillars with LCC on them, just before the third light.

2319 S. Cedar Crest Boulevard, Allentown, PA 18103 (610) 433-7443
lehighcc.com

PRESIDENT
WILLIAM E. BROOKS
HANOVER COUNTRY CLUB
(717) 259-8706

VICE PRESIDENT
MARK V. DELSANTRO, CGCS
(610) 269-5159

SECRETARY/TREASURER,
GCSAA LIAISON
WILLIAM F. RAMSEY
RANGE END GOLF CLUB
(717) 432-3711

PRESIDENT EMERITUS/BYLAWS
DANIEL W. ACHENBACH
FOXCHASE GOLF CLUB
(717) 336-3847

NEWSLETTER EDITOR
MARK V. DELSANTRO, CGCS
(610) 269-5159

MEDIA/PUBLIC RELATIONS
PETE RAMSEY
RANGE END GOLF CLUB
(717) 432-3711

NOMINATIONS/CHAPTER RELATIONS
RON DIFENTHALER, CGCS 2002
COLONIAL COUNTRY CLUB
(717) 545-6760

BYLAWS/EDUCATION
RANDY M. SUPER 2002
PINE MEADOWS GOLF COMPLEX
(717) 865-1445

MEMBERSHIP
TOM L. KINTZER 2003
BLUE MT. VIEW GOLF COURSE
(717) 865-4401

DAVE FREY 2004
COUNTRY CLUB OF HARRISBURG
(717) 545-8553

GOLF
FARON J. STOOPS 2003
(717) 765-4935

CHRIS MARTIN 2004
IRON VALLEY GOLF COURSE
(717) 279-7409

AFFILIATE REPRESENTATIVES
SCOTT C. FISCHER
(717) 558-9653

THOMAS MAHUTE
(717) 892-0339

PAST PRESIDENTS
DANIEL W. ACHENBACH
FRED N. BAKER
CHARLES A. BARLEY
ROBERT BEYER, CGCS
C. WILLIAM BLACK, CGCS
GREG BORZOK
JOHN J. BOYD
DWIGHT H. BRUBAKER
CHARLES H. CADIZ, CGCS
JOHN A. CHASSARD
KENNETH R. DIETRICH, CGCS
JOHN DOUGHERTY
GREGORY C. FANTUZZI, CGCS
JEFFREY L. FRY, CGCS
RICHARD FUNK
JOHN L. GEHMAN
ANTHONY P. GOODLEY, CGCS
MICHAEL C. HAIR
RILEY E. HECKERT
FRED HEILEN, CGCS
CAMERON G. HENDERSON
JAMES W. JONES, CGCS
BYRON F. KNOLL, JR.
HARRY L. LATCHAW
H. JIM LOKE, CGCS
JAMES N. MACLAREN
JOHN P. MCCORMICK
GEORGE MORRIS
THOMAS C. OCEPEK
Y. LEWIS PAYSON
DAVID P. PORTZ, CGCS
DAVID M. RAFFERTY
DANIEL L. SNOWBERGER
SAMUEL R. SNYDER, CGCS
RICHARD J. SUTTLES
EDWARD A. TABOR
WILLIAM G. WALL, JR.
DAVID C. WEITZEL, CGCS
MICHAEL WILT
RICHARD WILT
TERRY L. WUESCHINSKI, CGCS
THEODORE S. ZABRENSKI

Membership News

The following individuals have applied for membership into our association. If there are no written objections within the next seven days, they will be accepted into CPGCSA at the next meeting.

Karen Hartman, Sales Representative
Cleary..... Class AF

Dorothy Stancill, Director of Sales
Harford Industrial Minerals..... Class AF

We would like to welcome the following individuals into our association.

Jason Bell, Assistant Superintendent
Bent Creek Country Club..... Class C

Kirby Fitzingo, Assistant Superintendent
Bent Creek Country Club..... Class C

Ronald Garrison, Superintendent
Fox Hill Country Club Class A

Charlie Koennecker, Jr., Sales Representative
United Horticultural Supply Class AF

If you know of anyone who is interested in membership into the association, please have them contact Tom Kintzer, Blue Mt. View Golf Course (717) 861-5722.

Upcoming Events

- **August 14, 2002** - Penn State Turfgrass Field Day, Joseph Valentine Turfgrass Research Center, PSU
- **September 20, 2002** - 28th Western PA Turfgrass Tournament, Totteridge Golf Club, Greensburg, PA
- **October 21, 2002** - 26th Annual Joseph Valentine Memorial Golf Tournament, Whitmarsh Valley Country Club, Lafayette Hills, PA.
- **November 5-7, 2002** - Penn State Golf Turf Conference, Nittany Lion Inn, Penn State University.
- **January 7-9, 2003** - Eastern PA Turf Conference & Trade Show, Valley Forge Convention Center, King of Prussia, PA
- **January 30, 2003** - Northeastern PA Turf School & Trade Show, The Woodlands Inn & Resort, Wilkes-Barre, PA
- **February 25-27, 2003** - Western PA Turf Conference & Trade Show, Pittsburgh Expo Mart/Radisson Hotel, Monroeville, PA.

2003 CPGCSA Board of Director Nominations

The CPGCSA Annual Meeting with the election of officers will be held on October 15, 2002 at Pine Meadows Golf Complex. Listed below are the nominations:

President:
Bill Brooks

Vice President:
Pete Ramsey
Ron Diefenthaler, CGCS

Secretary/Treasurer:
Faton Stoops

Directors:
Steve Ludwig
Mark MacDonald
Steve Gross
John Colo

If you or someone you know is interested in running for the 2003 Board of Directors, please contact Ron Diefenthaler at Colonial Country Club (717) 545-6760.

Handyman Secrets Revealed

It's like some people are born with it. They're not afraid to take a VCR completely apart, and always manage to get it back together with hardly any parts left over. We asked them to share some of their secrets:

1. If you can't find a screwdriver, use a knife. If you accidentally break off the tip, don't worry - now it's a screwdriver.
2. Try to work alone. An audience is rarely of any help.
3. If what you've done is stupid, but it works, then it isn't stupid.
4. Work in the kitchen whenever you can. Many fine tools are there, it's warm and dry, and you are close to a refrigerator.
5. If it's electronic, just go buy a new one.
6. Think simple: Get a new battery. Replace the bulb. Check the fuse. See if the tank is empty. Try turning the switch "on." Paint over it.
7. Take credit for miracles. If you dropped the alarm clock and it suddenly starts working, you fixed it.
8. Regardless of popular opinion, an experienced craftsman knows that kicking, pounding, swearing, and throwing sometimes does help.
9. If something looks level, it is level.
10. If at first you don't succeed, it's okay to redefine success.

Gator Snared at 15th Green

After 3 days on run, small reptile found on golf course in a water hazard

Ally's vacation was cut short Saturday after three days on the lam. Her capture has eased the minds of East Hempfield Township residents and law enforcement officials who worried about an attack. The three-foot long American alligator eluded searchers for more than five hours after being spotted on the edge of a pond just off the 15th green at Four Seasons Golf Course around 9:30 AM Saturday. She swam leisurely around the pond, which measures about 80-by-40 feet, surfacing only for a breath of fresh air. Mark Brinkman, Ally's owner, spent the time with 15-20 neighbors and friends trying to figure out the best way to get Ally out of the water. She had different ideas. After all, the pond - with fish, bullfrogs, insects, and ducks of all sizes was an alligator's paradise. And since the pond provided Ally with everything she needed, Brinkman said trying to lure her out with normal food - raw chicken or ground turkey - would be fruitless. In the end, neighbor Barry Hayes caught Ally in a police snare after Brinkman and friends used nets and a canoe to push the gator toward the pond's shoreline.

Brinkman, worried during the past three days that his escaped alligator put fear into his neighbors, was also concerned Saturday about interrupting the golfers' day. "I don't want to infringe on anyone's right to enjoy their day." But the golfers didn't let such a thing as an alligator get in the way of their game. Most had a few gator jokes, especially the ones who hit their balls into the water. "Gatorbait!" they'd say. In fact, it was a foursome playing in the Manheim Central Football Boosters tournament that first spotted Ally. They called 911, sending the East Hempfield Township police to notify Brinkman. Saturday was the first actual sighting of Ally since her escape over the wall of her family's porch last Wednesday. Brinkman was able to get there within minutes since the pond is only about half a mile from his Indian Springs Drive house.

Craig Hall, Four Season's golf pro, who gave the crew permission to launch the canoe, said he couldn't allow the dragging because this pond holds the course's irrigation system. John Fetzeck, the course's superintendent, then came on scene to offer help. When he saw what was going on, he called in East Hempfield Township Manager, George Marcinko. "My gut feeling is go in and get the thing and get this mess over with, but we don't want anyone to get hurt," Fetzeck said. Fetzeck said since the pond is owned by the township, they were concerned about liability if anyone would be hurt. Fetzeck told the group not to go into the water without a boat. "Now that we know it's here," Marcinko said "they need to get it."

And get her they did. At 2:45 pm they pulled the three foot, five pound alligator hissing and rolling out of the pond. Ally is now back in her 500 gallon backyard pond where she has lived for the past four years after being found in the woods in the Marietta area.

(This is a condensed version of the article that appeared in the Lancaster Sunday News on July 14, 2002 written by staff writer Chris Foehlinger. For the entire story, please contact Wanda.) Just another day on the course, right John???



PHILADELPHIA TURF COMPANY

4049 LANDISVILLE ROAD, BOX 865
DOYLESTOWN, PA 18901-0865
215-345-7200 • FAX: 215-345-8132



Toro Irrigation Heads, Controllers, & Valves
Buckner by Storm Brass Products
Flowtronex Pump Stations
Carson & Ametek Valve Boxes
Kennedy & Nibco Valves
Wire, Electrical, & Grounding
PVC Pipe & Fittings
Ductile Iron Fittings
Four Salesperson Team
Six Support Person Team
Four Serviceperson Team
Authorized Independent Service Agents
On-site Technical Training

**Equipment & Irrigation,
Parts, Sales, & Service
you can depend on.**

Toro Reel Mowers, Rotary Mowers
Sprayers & Spray Technologies
Aerification Products
Utility Vehicles & Attachments
Large Selection of Parts
Demonstration Units
Nine Salesperson Team
Fourteen Serviceperson Team
Shop & Road Service
Package Programs
Leasing Options
On-site Service Training
Service Seminars & Continuing Education Courses

Largest supplier of turf and irrigation equipment in Eastern PA, Southern NJ, and Newcastle County, DE.

Heather and Gorse

By Mark V. DelSantro, CGCS

With all the heat and humidity, let's start off with a little Rhizoctonian humor... "Following an enjoyable evening out on the town, what did the girl mushroom say to the boy mushroom?" "You're really a fungi!!!" If anyone needs special education let me know, I'll explain it to you!

Some relatively current events that failed as the main topic of this weather-related edition of heather and gorse... on the relative humidity front, I'm sure most of you heard that that big bad male chauvinist Hootie Johnson, President of Augusta National refused to be bullied by some national women's group who demanded that the exclusive all men's club open their doors to women members or else they'd encourage the PGA to take the Masters to another venue. Ooooo, now there's a threat... Too bad the PGA has nothing to do with this "by invitation only" major event. It was an interesting strategy though... kind of like Delilah taking on Sampson, but only after he went prematurely bald.

Speaking of major underdogs... on the cool and rainy front, as I'm writing this article, a young lad named Eldrick is trying to get his name chiseled into another Claret Jug as the British Open Champion. I am still of the belief that if all the golfers on all the world's tours united, organized, and paid Tiger a disappearance fee, they might be able to increase their probability of winning one of the major tournaments. Heck, Phil Mickelson would probably be the largest contributor!

Finally, on the solar eclipse front... how about that forest fire north of Montreal that had such a profound effect on our weather over the July 4th holiday weekend? Isn't it amazing to think that a fire over 1000 miles away could block the sun and cool us down so significantly??? I thought this was simply a freak of nature, but consider this tidbit of information... following every major volcanic eruption in the world over the past twenty years; we have experienced significantly lower global temperatures for at least two years. Remember Mt. St. Helens? I remember it having an enormous effect on the weather out here for at least a year and I'm not sure that was considered a major eruption, although I'm sure to the people who lived out there it was major enough.

As a follow up to last month's disease edition... I want to thank Jeff Fry, CGCS for indirectly informing me (through Wanda) that I spelled Anthracnose incorrectly (no "t" following the "c"). I told you I've never had to deal with the stinking disease... why would I know how to spell it?

Speaking of Anthracnose... call this section Anthracnose, the Rest of the Story... Dr. Buckley took the words right out of my mouth at Regents Glen. Riddle me this Batman... has a healthy grass plant ever gotten Anthracnose Basal Rot? Do we all agree that this bugger is a senecto-pathic disorder (next to fungi-toxicity, this may be my 2nd favorite word)???

While last month I wrote about how this disease is the real deal (and I stand by this statement), it's only the real deal on stressed out turf. In other words, similar to Root Pythium, it's not the cause of the problem; it's the resulting effect! The cause of the problem... "I have met my enemy and he is me!" Cultural practices being taken to the nth degree, environments being manipulated because it makes for a prettier golf hole, short cuts on construction, greater demands with less resources, etc... someone either get me a soap box or a bar stool. The latest, greatest greensmower can mow greens at 1/16th of an inch or 0.0625". Does anyone doubt that before too long (if it isn't already happening) someone will be mowing their putting greens at this height just to see if they could???

Remember Turf Management 101, on the first day of class when the professor started talking about the basics of growing turf. Y'all remember... sunlight, air, nutrients, water, temperature, etc... Of course, that professor never had to worry about job security because of slow greens either. I know I'm probably preaching to the choir... the USGA Agronomists have been preaching this plant health message perpetually and I'm sure will continue to do so in perpetuity! As previously mentioned, do it if you want, but keep that resume updated!

On a colder front and shifting into this month's main topic... El Nino is officially back, but not to worry... there is reasonable evidence that we're entering into a twenty-year cooling pattern. In fact, global temperatures, recorded since the mid to late 1800's, have always tended towards a decadal pattern, meaning that they oscillate every few decades sinusoidally. Apparently, towards the end of a warm trend there tends to be warm extremes, while towards the end of a cooling trend, there is a tendency towards cold extremes. Meteorologically, through out the 80's and 90's, we experienced a warming trend of sorts. The heat extremes we've experienced since 1997 apparently are an indicator that the weather has begun to shift into a colder cycle.

Now don't go out and order a dozen of those L.L. Bean authentic Alaskan parkas just yet... three things to keep in mind... 1) the temperature oscillation we're talking about is a regressive statistical measurement, meaning there will still be some variance year to year, but the average as a whole will trend downward... 2) the oscillation differential we're talking about is only about two degrees total stretched over a twenty-year period, or about 1/10th of a degree per year on average (put away those hoses, boys!!!)... 3) remember from a heather and gorse of yore, that global warming really isn't global warming as an environmentalist would have it... increases in global temperatures can be attributed more to increased urbanization than to increases in greenhouse gases... translated, this means that if your golf facility is located in or around a highly urbanized area, this 0.1 degree per year cooling effect may not be as noticeable as the 0.1 degree per year cooling effect up at Happy Valley.

.....continued on page 6.....

Heather & Gorse....cont'd from page 5

Speaking of oscillations, and along the same lines, our weather seems to be primarily controlled by the temperature of the oceans and more specifically by a few different oceanic oscillations... the EPO, which is the Eastern Pacific Oscillation is a semi-accurate predictor of our short-term weather patterns. The other strong influence is called ENSO, which measures the severity of El Ninos and La Ninas, which simply further complicate this already complicated discussion. The long and short of it, keeping ENSO out of the formula, is that when the EPO is positive, our weather on the east coast is hotter than normal and when the EPO is negative, our weather tends towards more comfortable summer temperatures. What's interesting, the EPO index can be checked daily on the NOAA website. I found this information to be fascinating simply because when you look at the EPO index from March to present, our weather patterns ebbed and flowed along the index lines.

The bottom line is that everyone should enjoy the next twenty cool years while you can my friends... and don't take this with a grain of salt even though the change in temperature isn't much larger than that. Furthermore, I want y'all to remember that in 10 years or so, which will be ten years shy of the next period of actual global warming, when the meteorologists are talking about how the globe is cooling (in every place except the cities), the polar glaciers are thickening, and the oceans water levels are raising, remember that you heard it here first. That's my humoristic, chauvinistic, volcanic, meteorologic, senecto-pathic, and always oscillating view from the heather and gorse.

You Are Invited

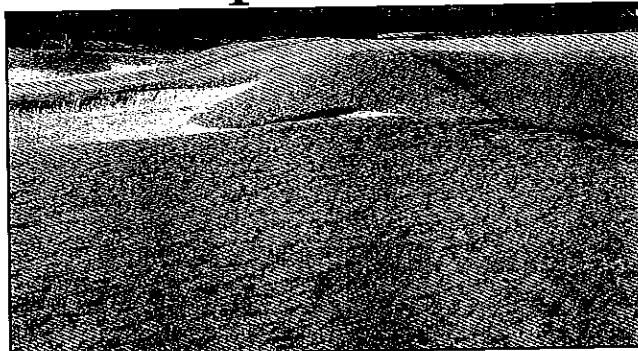
Colonial Country Club is offering the opportunity to witness first hand the various phases of their Golf Course Renovation Project. The first Open House/Course will be on Thursday, August 22nd starting at 9:00AM. You will be given a tour of the course, have the ability to ask questions, and you are free leave when you want. The September and October dates are to be determined.

A quick snap shot of the project is that in August, the fairways will be re-grassed using the soil sterilant "Basamid" and a majority of earthmoving will be taking place. In September, the fairways (better be) growing in while the greens, tees, and bunkers will be in the final shaping process. In October, the project will be in its final phases as the greens' surfaces will be sodded while the green, tee, and bunker surrounds are seeded by a hydro-seeding process using the product EcoAegis.

This will be an informal tour. There is no need for an RSVP, just show up at the clubhouse at 9:00AM. Any questions, please call Ron Diefenthaler at (717) 545-6760.



No Tarps. No Tanks.



No Hassles.

Basamid®, the only granular soil fumigant available, quickly eliminates weeds, nematodes, grasses and soil diseases without complicated application equipment or tarps. And you can reseed in as little as 10 to 12 days. **Basamid** is the quick, easy way to get your new turf off to a healthy, vigorous start. For more information, call 1-800-545-9525 or visit www.turffacts.com. Always read and follow label directions.

Basamid®

Granular Soil Fumigant

Renovation Made Easy.

BASF

Regents Glen Golf Winners



Annual CPGCSA Family Picnic

Saturday, October 5, 2002

Creekview Park, Camp Hill

12:00 Noon - 5:00 PM

Lunch - 1:00 PM - 2:30 PM

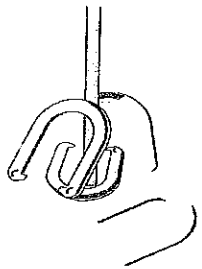
BBQ Ribs and Chicken, Potato or Pasta Salad, Coleslaw, Baked Beans, Corn on the Cob, Rolls, Make Your own Sundae Bar, Iced Tea and Lemonade.

Playground facilities,
Basketball, Softball, Kickball

Food, Fun, Games
for Kids

Bring along your sports equipment.

Name _____

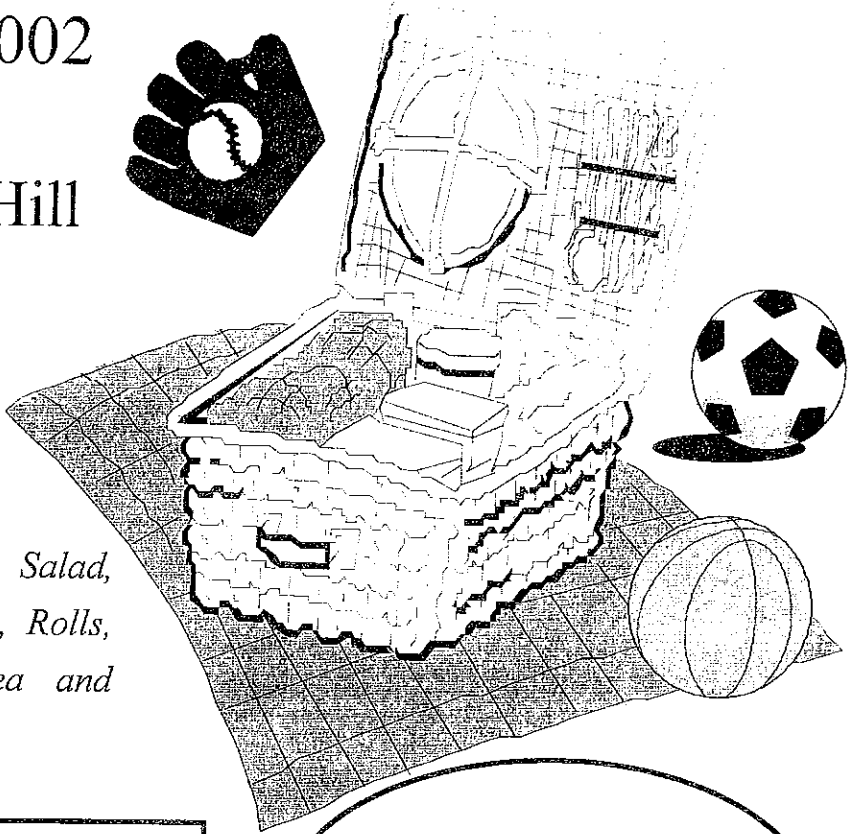
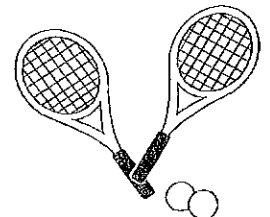


_____ # Adults @ \$13.00
_____ # Children (Ages 5-12) @ \$5.00
_____ # Children (Ages 1-4) @ Free

Deadline: September 27, 2002

Checks Payable to : CPGCSA

Mail to : Wanda S. Fry, P. O. Box 1420, Lebanon, PA 17042



The Turf Student Scholarship Tournament

Wednesday, September 25, 2002

Tournament Schedule...

Box Lunch
Served 11:30 a.m. - 12:15 p.m.

Shotgun Start
12:30 p.m.

Dinner and Golf Awards
5:30 p.m.

The George E. Ley Co. is pleased to sponsor The Turf Student Scholarship Tournament as a fundraiser for the scholarship programs for the Philadelphia Golf Course Superintendent's Association and the Central Pennsylvania G.C.S.A. *The tournament is being held at Pilgrim's Oak Golf Course, Peach Bottom. Individual entry is \$75 (includes greens fee, cart and lunch) with dinner \$15 additional.* After expenses monies will be directly appropriated to the associations based on their individual participation.

The George E. Ley Company will provide greens fees, cart fees and lunch. Signage, prizes and dinner will be charged against total income of the tournament. The funds will be raised through individual entry fees and sponsorships.

... Sponsorship Opportunities.....

☐ *Golf Package* -- \$90
\$75 Golf, \$15 Dinner

☐ *Tee Sponsor* -- \$200
Greens fee and cart
lunch and dinner
tee sign

☐ *Green Sponsor* -- \$300
Greens fee and cart
lunch and dinner
green sign
Golf hat

☐ *Hole Sponsor* -- \$500
2 greens fees and carts
2 lunches and dinners
tee sign
2 Golf shirts

☐ *Par Sponsor* -- \$1500
4 greens fees and carts
4 lunches and dinners
green sign and a large sign at reception area
4 Golf shirts and hats

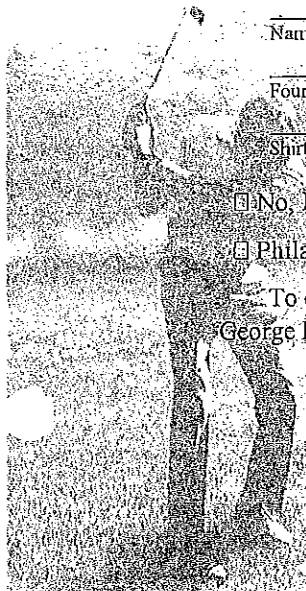
☐ Yes, I want to participate in The Turf Student Scholarship Tournament

Name	Company	Address	City, State, Zip	(area code) Phone
Foursome Names		Name	Name	Name
Shirt Size	Shirt Size	Shirt Size	Shirt Size	

☐ No, I cannot attend, but please accept my tax-deductible contribution of \$ _____

☐ Philadelphia G.C.S.A. ☐ Central Pennsylvania G.C.S.A.

To ensure proper registration, please reserve, make all checks payable and return by 9/13/02 to:
George E. Ley Co. • memo: Turf Student Scholarship Fund • 130 Devereux Road • Glenmoore, PA 19343
Note: Upon receipt of registration, directions will be sent.



David Rafferty Memorial Award

The CPGCSA Board of Directors has approved the **David Rafferty Memorial Dedication, Leadership and Service Award**. The award committee (Greg Borzok, Chuck Cadiz, Jim Jones and Sam Snyder) have developed the award concept and nomination forms that will be sent to the membership shortly. Watch your mail and reply quickly as the nomination deadline will be September 15th.

This award will recognize association members who have consistently worked to benefit CPGCSA and its members in the fashion of Dave Rafferty, a former president who passed away last year. The award will be presented at a special meeting that will be announced at a later date.

Equipment For Sale

Please contact Tony Goodley, Heritage Hills Golf Course (717) 755-1919 regarding the following equipment.

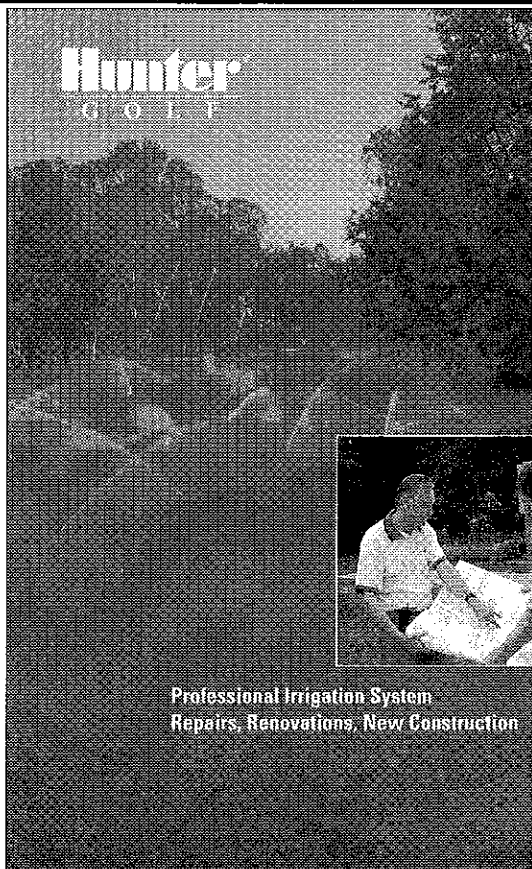
- Ryan GA 30, \$4,000

We will continue to advertise "used equipment" and "equipment wanted" in each newsletter. If you have anything that may be of interest, please contact Wanda to place your ad FREE!!

Kids: What Do They Know?

Grade-schoolers were asked to list one trinket of truth they'd gleaned from their life. They came up with surprising bits of wisdom.

- "When you want something expensive, ask your grandparents" - Matthew, age 12
- "Don't flush the toilet when your dad is in the shower" - Lamar, age 10
- "Never dare your little brother to paint the car" - Phillip, age 13
- "When your dad is mad and asks you, "Do I look stupid?", don't answer.—Heather, age 16
- "Sleep in your clothes so you'll be dressed in the morning" - Stephanie, age 8
- "Stay away from prunes" - Randy, age 9
- "Wear a hat when feeding seagulls" - Rocky, age 9
- "Listen to your brain. It has lots of information" - Chelsey, age 7
- "Remember you're never too old to hold your father's hand" - Molly, age 11
- "Never talk back to a teacher whose eyes are twitching" - Andrew, age 9
- "Never trust a dog to watch your food" - Patrick, age 10
- "When you get a bad grade in school, show it to your mom when she's on the phone - Alysha, age 13
- "Don't ever be too full for dessert" - Kelly, age 10



Professional Irrigation System
Repairs, Renovations, New Construction

ONE CALL HANDLES IT ALL JOHN DEERE LANDSCAPES

You're working to keep your course 100 percent playable throughout the season. Now there's a new team member ready to provide the irrigation supplies, service and support you need to achieve that goal — John Deere Landscapes. With a nationwide network of branches and staff, John Deere Landscapes has the professional expertise and equipment to solve any site challenge. Call today: 800-642-3706.

Irrigation Systems Featuring Hunter Golf Reliable rotors, valves, central control systems, maintenance radios

Pump Stations Customized for your course

Fountains and Landscape Lighting AquaMaster and Oase fountains, Vista Professional Outdoor Lighting

BoardTronics Controller Board Repairs Replace outdated Toro® and Rain Bird® controller boards: 888-855-9132

Direct Sales Quantity shipments of landscape products and nursery stock: 866-880-9380

More Than 220 Branches Nationwide



JOHN DEERE
LANDSCAPES

www.JohnDeereLandscapes.com

On-Site Consultation: 800-642-3706

The Election Road

By Mark D. Kuhns, CGCS
Director of Grounds—Baltusrol Golf Club

The election of GCSAA directors and officers is over for another year, and I must admit, it was a very educational experience. Unlike our local chapter election, running for a seat on the national Board can become a very competitive contest. Every aspect of your career is scrutinized under a microscope and very few stones are left unturned.

The election process starts when at least one chapter nominates one of their members or a member of another chapter. This individual, in most cases, has contributed a great deal of time with chapter matters and has served on the Board at one time or another. Most candidates have served on GCSAA committees for several years before a run for the Board. All of this experience demonstrates a level of competence and understanding of our profession and the way GCSAA operates.

The next step on the road to election is the candidate's review by the Nominating Committee. The Nominating Committee verifies all of the above information and also takes into consideration the candidate's service with allied associations. In many cases candidates serve on state turfgrass association turf endowment boards. Some individuals serve on advisory boards of various turf schools, regional conferences and other entities dealing with our profession.

Once nominated by the committee, a candidate must start down the campaign trail. A candidate must now build a platform based on issues within the GCSAA and how he or she will deal with these matters if elected. Issues may include everything from PDI to certification standards. From my personal observation, a candidate better have a firm grasp of the issues, when it comes time to meet the delegates in Kansas.

There are 104 chapters of GCSAA and each chapter has a voting delegate and an alternate delegate. The delegates meet at GCSAA headquarters in Kansas each fall to discuss the many issues dealing with our association. The delegates also meet the candidates at this time and have the opportunity to meet and discuss issues with them one on one. The candidates also will make a short presentation to all of the delegates at this time. Having been through this, I can tell you this is a nerve-wracking situation because this is probably the most important talk you will give in your career. You will never be totally prepared to deal with all aspects of an election, but you will find that you are better prepared than you think and the best in you will begin to surface.

Running for office is much more than just running a campaign; it is a major commitment and sacrifice in your life. You will need the support of your family and employer. If you don't have the support of your family and employer, your campaign is dead from the start. If elected you will spend from 50-100 days a year away from home and job. This is a significant amount of time away, and you will have to deal with many problems from a distance. A candidate must have a strong support team to make his or her time on the board run smoothly. An employer must understand the significance of GCSAA to the golfing industry. A superintendent serving on the Board of GCSAA will play a very important role in this industry. Golf clubs allowing superintendents to serve must understand the important role that they play in serving the game of golf and the industry in general. These clubs are usually the leaders in the industry and contribute heavily to the game of golf.

Having experienced my first campaign, I can honestly say that it was a very gratifying experience. I have made many new friends over the course of the campaign and have grown significantly in my understanding of our profession. It was a great honor to be nominated and to receive over 2,600 votes in the election. Although our campaign came up a little short of needed votes to win, I fully intend to run in the next election if nominated.

I want to thank the Board and all the members of Central Pennsylvania GCSA for your overwhelming support of my campaign. I would not be able to run an effective campaign without your support. Thank you! My committees in New Jersey and Pennsylvania did an outstanding job, and I want to thank them for their tireless efforts. Greg Nicoll of Maplewood Country Club in New Jersey and John Ferruchie of Deer Run Golf Club in Pittsburgh did outstanding jobs as co-chairmen of my campaign and are in the process of organizing the next one. I welcome any input or advice for the next campaign. Best of wishes to all of you for a successful season in 2002.

Newsletter Deadline

If you have any information that you would like included in the September newsletter, please fax information to Wanda at (717) 279-0368 or e-mail to cpgcsa@nbn.net by August 21, 2002.

Please contact Wanda with any employment or address changes, so that we can keep our records up to date.

Golf Results

Another successful day at the superb Regents Glen golf facility. Another great day surrounded by good friends and sharing knowledge and experiences. Be grateful for the opportunity to be a part of these meetings. Some take our monthly meetings for granted. Perhaps if some day you are not able to attend them, you will appreciate the value they have. I hope no one has to experience this, but just think about it.

The golf event was a two part competition: Best Ball Net of Partners and the Central Penn Association vs. the Philadelphia Association for the prestige of the \$100 donation to PTC in their name.

The competition was very close in both events, with the Central Penn guys edging out the Philly guys by 310 to 315.

The partners were as close:

1st		2nd	
John Chassard	61	Steve Graybill	59
Kelly Kressler		Paul Szymanski	
3rd		4th	
Ed Pondo	62	Warren Savini	62
Steve McDonald		Steve Stephens	

Closest to the pins:

#3	Tom Kintzer
#12	Tony Grieco

Next month's meeting will be hosted by Philly and will be held at the Lehigh Country Club. Look out Central guys, Philly may have a score to settle.

Take care and stay cool!

Faron Stoops, Golf Chairman

**If you are setting up a golfing group or partner prior to a meeting, please be sure to list your preferred partner/partners on the reservation form. Many of our hosting courses prefer to have this information in advance. Thanks for your help.

Turf Sales and Consultation



ANDRE & SON, INC.
TURF KING PRODUCTS &
CONTRACTED SERVICES

Rich Gdovin

VOICE 888.887.3770, EXTENSION 674

FAX 570.278.4541

CELLULAR 607.761.9465

RESIDENCE, VOICE/FAX 570.825.9267

2 MILL STREET
 MONTROSE, PA 18801



Superior Products for the Turf and Horticultural Professional

237 East King St. • Malvern, PA 19355

800-262-2127 • FAX (610) 644-7791

www.fisherandson.com

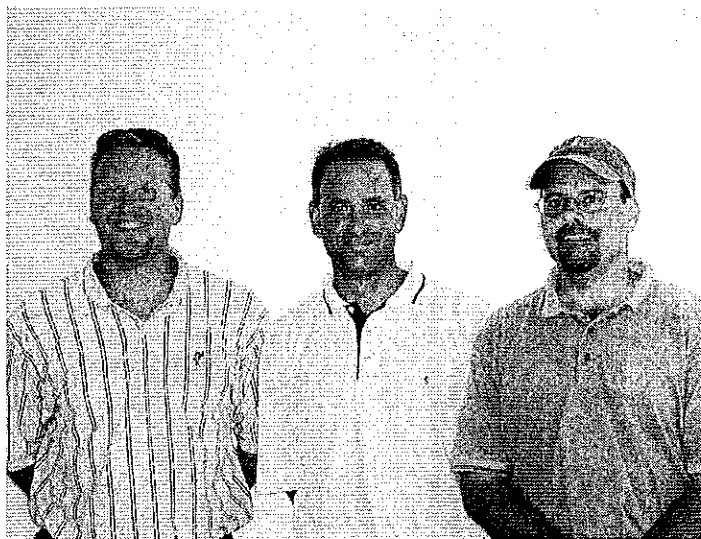
ConSyst® SysTec 1998®

SYSXSTAR
 WDG



Thom Mahute
717-892-1455

Regents Glen Golf Winners



Kelly Kressler, John Chassard, Tony Grieco

USGAcontinued from page 1

- Bacterial wilt initially appears as dime sized spots of bleached turf. As the disease progresses, the spots may coalesce and impact playability. If you think that bacterial wilt may be affecting *Poa annua* on your greens, send a sample to a disease diagnostic lab. In this way, you can be sure what pathogen you are treating for.
- Insects. The Mid-Atlantic Region agronomists continue to receive calls regarding annual bluegrass weevil that was once confined to New England, the New York metropolitan area and New Jersey, but is now moving south into southeastern Pennsylvania and Maryland. The duration of damage from annual bluegrass weevil seems to be very long this year with several generations of insects.
- Scout your golf course. If turf appears to be drought stressed on the edges of collars, tees or fairways, but adequate moisture is present, the culprit may be annual bluegrass weevil. Cut a plug from the turf, break it apart, and look for the rice-sized larvae in the upper portion of the soil profile. To confirm diagnosis, send a sample of these insects to a diagnostic lab.
- Drought Management. The drought is starting to take its toll on many golf courses. Remember, most of these problems are more aesthetic than anything. With good traffic management, playability can be maintained. Keep carts out of the roughs and off of drought stressed fairways. Consider raising mowing heights slightly and backing off of aggressive putting green management strategies such as verticutting and rolling. Reducing turf stress may be the difference between survival and significant turfgrass loss.

As always, if the agronomists of the Mid-Atlantic region can be of assistance at all, you can contact Stan Zontek (szontek@usga.org) or Darin Bevard (dbevard@usga.org) at 610/ 696-4747 or Keith Happ (khapp@usga.org) at 412/ 341-5922.

***Stan also mentions that the hyperodes weevil was found, damaging bentgrass fairways.....at South River Country Club in Annapolis, MD. This was confirmed by Darin Bevard and Dr. Peter Dernoeden from the University of Maryland.

Drought Information Center

Drought Condition Summary
July 22, 2002

On June 14, Governor Schweiker lifted the drought emergency for six counties and restored 14 other counties to normal status. Dauphin, Perry and Wayne counties were upgraded to drought watch status and Bucks, Montgomery and Philadelphia counties were upgraded to drought warning status. These counties are indicated on the drought status map and in the news release at <http://www.dep.state.pa.us/dep/subject/hotopics/drought>.

Through the first 21 days of July, county precipitation totals range from 0.1 inches (Carbon County) to 2.2 inches (Fayette County). Departures from normal for the first 21 days of July range from -2.8 inches (Berks, Carbon and Monroe Counties) to -0.8 inches (Wyoming County). The average statewide departure from normal for the period was -1.96 inches and the average rainfall for the period was 0.83 inches. For the past 365 days, precipitation departures range from -15.5 inches (Philadelphia County) to +2.9 inches (Bradford County). Nine other counties, Lancaster, Chester, Delaware, Montgomery, Franklin, Berks, Perry, Bucks and Cumberland, have departures for the last 365 days that exceed or equal -10.0 inches. It should be noted that on July 18, 2002, the Climate Prediction Center released its most recent 3-month outlook and predicts below normal precipitation and normal temperatures for the period August through October 2002.

As of this morning, the daily streamflow readings were below normal across most of the state. Daily streamflow readings across the state range from 16% of normal streamflow to near normal streamflow. Instantaneous streamflow readings of 160 gages for July 22nd at 1:45 a.m. indicate that there was 43 gages with flows less than the 25th percentile, 19 at less than the 10th percentile and 6 at record lows. This constitutes a slight increase in below normal flows from the previous week and continues the trend of decreasing streamflows.

The 30-day streamflow duration graphs for July 22nd reflect the affects that the lack of precipitation in combination with evaporation and transpiration has had on streamflows this past week. Most gages are still in the normal range, however the 30-day values continue to drop at a significant rate. The lowest flows continue to occur in the southeastern and south-central portions of the state. In the Delaware Basin all 18 stream gages are decreasing, with 5 gages in watch and 2 in emergency. In the Susquehanna River Basin, all of the 31 gages also show decreases in their 30-day average, with 2 duration graphs in emergency, 5 in warning and 4 in watch. Of the 3 Potomac River Basin gages, there is one in watch, warning and emergency. In the Ohio River Basin, all 22 gages are decreasing with 7 gages now in watch.

The 30-day duration graphs for July 22nd indicate that groundwater levels continue to drop as evaporation, transpiration and minimal rainfall affect groundwater recharge. In the Delaware Basin, all 14 groundwater-monitoring gages are decreasing, with 6 in emergency. In the Susquehanna Basin, all 20 gages continue to decrease with one well in emergency and 2 in watch. In the Ohio River Basin, all 13 gages are dropping with one well in watch and another in emergency.

William Rahling, Bob Eichert
Aer-Core, Inc.
47 Heron Hill Drive
Downingtown, PA 19335
(610) 458-0890

Shaun Barry
Aventis Environmental Science
1133 Rt. 27
Somerset, NJ 088873
(732) 846-8173

John Wiblishauser
Bayer
318 E. Glenside Avenue
Glenside, PA 19038
(215) 887-8936

Steven Chirip
Egypt Farms
HCI Box 54B
Swiftwater, PA 18370
(800) 899-7645

Bennett Wartman
Farm & Golf Course Supply
7709-7725 Ridge Avenue
Philadelphia, PA 19128
(215) 483-5000

Dave Feldman, Dale Andrew,
Dennis DeSanctis
Finch Turf Equipment
419 Industrial Drive
North Wales, PA 19454
(800) 875-TURF

Thomas Mahute
Fisher & Sons, Inc.
3009 Gloucester Street
Lancaster, PA 17601
(717) 892-1455

CPGCSA Supporter List

Paul Szymanski
Golf Cars, Inc.
4180 Skyron Drive
Buckingham, PA 18912
(215) 340-0880

Dave Nehila
Growing Solutions, Inc.
P. O. Box 596
White Marsh, MD 21162
(888) 684-8488

Leroy Hurst
Hollingers Lawn & Garden
4126 Oregon Pike
Ephrata, PA 17522
(800) 650-1398

Jim Byrne
Helena Chemical
94 Tanglewood Drive
Quarryville, PA 17566
(717) 786-0547

Greg Borzok, Ted Zabrenski
Lawn & Golf Supply Company
647 Nutt Road, P. O. Box 447
Phoenixville, PA 19460
(610) 933-5801

Scott Fischer, Matt Fellows
Lesco
605 Latshmere Drive
Harrisburg, PA 17109
(717) 558-9515

Tom Drayer
Philadelphia Turf Company
4049 Landisville Road
Doylestown, PA 18901
(215) 345-7200

Don Hollinger, Dan Davis,
Paul Wickey,
Jim MacLaren
Simplot Partners, Inc.
858 Mt. Joy Road
Manheim, PA 17545
(717) 664-4204

Charlie McGill,
Jeff Patterson
Stull Equipment Co.
201 Windsor Road
Pottstown, PA 19464
(610) 495-7441

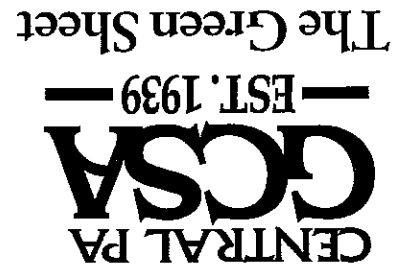
John Fowler
Syngenta
325 Mill Pond Lane
Oxford, PA 19363
(610) 998-2896

Thed Fraleigh
Turf Management Associates
901 Dawn Avenue
Ephrata, PA 17522
(800) 840-1711

Tom Walsh
York Distributors
5185 Raynor Avenue
Linthicum Heights, MD 21090
(410) 636-2400

**Thanks to our
supporters!**

Mark V. DeSantoro, CGCS - Editor
Wanda S. Fry - Executive Secretary
P.O. Box 1420
Lebanon, PA 17042



Mark Your Calendars!

Central Penn GCSA
has scheduled the following
GCSAA Chapter-Hosted seminars for
2003.

January 23

Effective Uses of Soil Amendments in
Golf Course Management

January 24

The Microbiology of Turfgrass Soils

2002 CPGCSA Meeting Dates

August 12	Lehigh Country Club John Chassard Meeting with Central, Philadelphia, and Pocono Associations
September 17	Butter Valley Golf Port John Gehman Golf Championship
October 15	Pine Meadows Golf Complex Randy Super Annual Meeting

CPGCSA Annual Family Picnic

Saturday, October 5, 2002
12:00 Noon—5:00 PM